

Dependence of chaotic diffusion on size and position of holes

G. Knight¹ O. Georgiou² C.P. Dettmann³ R. Klages¹

¹Queen Mary University of London, School of Mathematical Sciences

²Max-Planck-Institut für Physik komplexer Systeme, Dresden

³University of Bristol, School of Mathematics

Open Dynamical Systems:
Ergodic Theory, Probabilistic Methods and Applications
BIRS, Banff, 9 April 2012



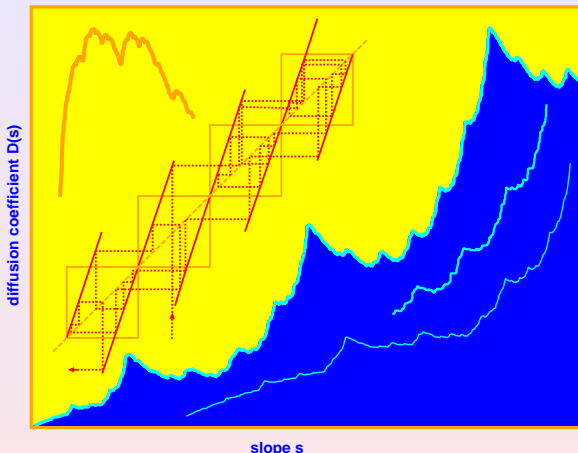
WARNING:

This talk is given by a theoretical physicist.

Outline

- 1 **hole dependence of diffusion** in a simple chaotic map
- 2 **parameter dependence of diffusion** in other maps and billiards

Simple maps with fractal diffusion coefficients



RK, Dorfman (1995)

Diffusion coefficient $D(s)$ is a **fractal function** of the slope s , due to **topological instability** under parameter variation.

Where to place a hole to achieve a max. escape rate?

Bunimovich, Yurchenko (2008/2011): **Bernoulli shift**

$$B(x) = 2x \bmod 1, \quad x_{n+1} = B(x_n)$$

with **escape through a hole**.

Theorem

Consider holes at *different positions* but with *equal size*.
Find in each hole the *periodic point with minimal period*.

Then the escape will be **faster** through the hole where the minimal period is **bigger**.

Corollary

The escape rate may be **larger** through **smaller** holes (cf. $D(s)$).
related work by Keller, Liverani (2009)

Question: Connection wrt irregularities diffusion \leftrightarrow escape?

Escape rate and diffusion coefficient

Solve the **one-dimensional diffusion equation**

$$\frac{\partial \varrho}{\partial t} = D \frac{\partial^2 \varrho}{\partial x^2}$$

for particle density $\varrho = \varrho(x, t)$ and diffusion coefficient D with **absorbing boundary conditions** $\varrho(0, t) = \varrho(L, t) = 0$:

$$\varrho(x, t) \simeq A \exp(-\gamma t) \sin\left(\frac{\pi}{L}x\right) \quad (t, L \rightarrow \infty)$$

exponential decay with

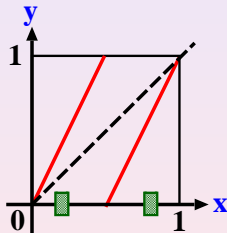
$$D = \left(\frac{L}{\pi}\right)^2 \gamma$$

escape rate γ yields **diffusion coefficient** D

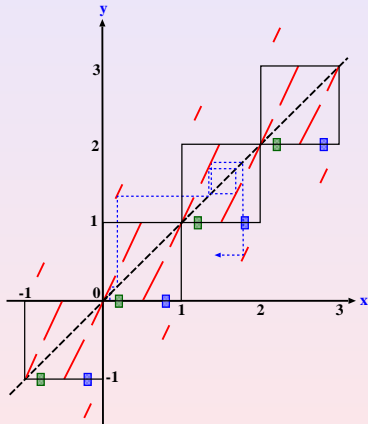
For a **diffusive dynamical system** the same relation can be established by solving the Frobenius-Perron equation, see *escape rate formalism* by **Gaspard, Nicolis, Dorfman (1990ff)**

A deterministically diffusive map

dig **symmetric holes** into the Bernoulli shift:



lift the unit cell by degree one and **couple** the cells suitably:



Question: How does the **diffusion coefficient** of this model depend on **size and position of a hole**?

Computing hole-dependent diffusion coefficients

rewrite the diffusion coefficient

$$D := \lim_{n \rightarrow \infty} \frac{\langle (x_n - x)^2 \rangle}{2n}$$

with average $\langle \dots \rangle := \int_0^1 dx \rho(x) \dots$, $x = x_0$ over invariant density $\rho(x)$ for $B(x)$ as

$$D_n = \frac{1}{2} \langle v_0^2 \rangle + \sum_{k=1}^n \langle v_0 v_k \rangle \rightarrow D \quad (n \rightarrow \infty)$$

Taylor-Green-Kubo formula

with integer velocities $v_k(x) = \lfloor x_{k+1} \rfloor - \lfloor x_k \rfloor$ at discrete time k
jumps between cells are captured by *fractal functions*

$$T(x) := \int_0^x d\tilde{x} \sum_{k=0}^{\infty} v_k(\tilde{x}),$$

as solutions of (*de Rham-type*) functional recursion relations

Computing the (w)hole diffusion coefficient

For the Bernoulli shift $B(x)$ the invariant density is $\rho(x) = 1$.

Define the **coupling** by creating a map $\tilde{B}(x) : [0, 1] \rightarrow [-1, 2]$:

- jump through *left* hole to the *right*: if $x \in [a_1, a_2]$,
 $0 < a_1 < a_2 \leq 0.5$ then $\tilde{B}(x) = B(x) + 1$ yielding $v_k(x) = 1$
- jump through *right* hole to the *left*: if $x \in [1 - a_1, 1 - a_2]$
then $\tilde{B}(x) = B(x) - 1$ yielding $v_k(x) = -1$
- otherwise no jump, $\tilde{B}(x) = B(x)$ yielding $v_k(x) = 0$

This map is **lifted by degree one**, $\tilde{B}(x + 1) = \tilde{B}(x) + 1$, $x \in \mathbb{R}$.

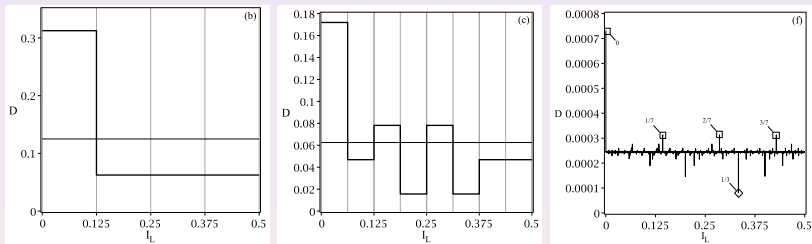
For this spatially extended model we obtain the exact result

$$D = 2T(a_2) - 2T(a_1) - h; \quad h = a_2 - a_1$$

Knight et al. (2011)

Diffusion coefficient vs. hole position

Diffusion coefficient D as a function of the position of the left hole l_L of size $h = a_2 - a_1 = 1/2^s$, $s = 3, 4, 12$:



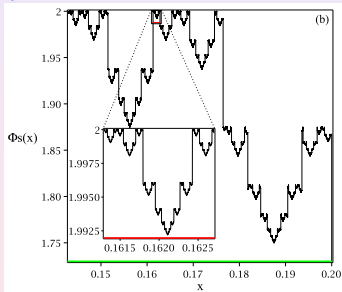
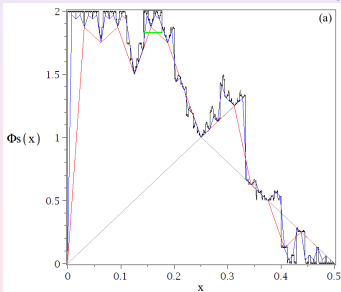
- (b), (c): for $l_L = [0.125, 0.25]$ it is $D = 1/16$, but for **smaller** hole $l_L = [0.125, 0.1875]$ we get **larger** $D = 5/64$
- (f): at $x = 0, 1/7, 2/7, 3/7$ particle keeps **running** through holes in one direction; at $x = 1/3$ particle **jumps back and forth**; these orbits *dominate diffusion* in the small hole limit

A fractal structure in the diffusion coefficient

resolve the irregular structure of the hole-dependent diffusion coefficient D by defining the **cumulative function**

$$\Phi_s(x) = 2^{s+1} \int_0^x (D(y) - 2^{-s}) dy$$

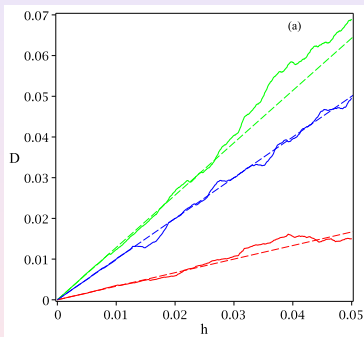
(subtract $\langle D_s \rangle = 2^{-s}$ from $D(x)$ and scale with 2^{s+1})



- $\Phi_s(x)$ converges towards a **fractal structure** for large s
- this structure originates from the **dense set of periodic orbits** in $B(x)$ dominating diffusion

Diffusion for asymptotically small holes

center the hole on a **standing**, a **non-periodic** and a **running** orbit and let the hole size $h \rightarrow 0$:



dashed lines from analytical approximation for small h

$$D(h) \simeq \begin{cases} h^{\frac{1+2^{-p}}{1-2^{-p}}}, & \text{running} \\ h^{\frac{1-2^{-p/2}}{1+2^{-p/2}}}, & \text{standing} \\ h, & \text{non-periodic} \end{cases}$$

p : period of the orbit

- **fractal parameter dependencies** for $D(h)$ (RK, Dorfman, 1995)
- **violation of the random walk approximation** for small holes converging to periodic orbits

Diffusion vs. escape

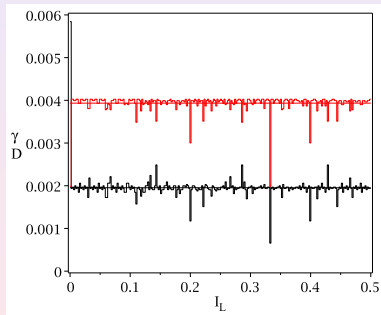
γ : escape rate out of only **one box**

D : diffusion coefficient for the **whole chain of boxes**

for small h :

	running	standing
$\gamma - \langle \gamma \rangle$	$-\frac{2h}{2^p}$	$-\frac{2h}{2^{p/2}}$
$D - \langle D \rangle$	$\frac{2h}{2^p - 1}$	$-\frac{2h}{2^{p/2} + 1}$

p : period of orbit



$\Rightarrow \exists$ **similarities and differences** between γ and D

A lifted Bernoulli shift with different holes

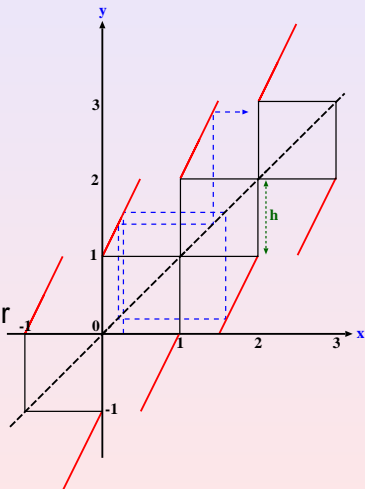
Consider the **symmetrically shifted** Bernoulli shift

$$M_h(x) = \begin{cases} 2x + h & 0 \leq x < \frac{1}{2} \\ 2x - 1 - h & \frac{1}{2} \leq x < 1 \end{cases},$$

$$M_h(x+1) = M_h(x) + 1$$

with shift $h \geq 0$ as a control parameter
(different h cp. before, sorry!)

Gaspard, RK (1998)

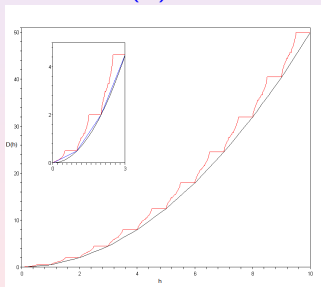


Another fractal diffusion coefficient

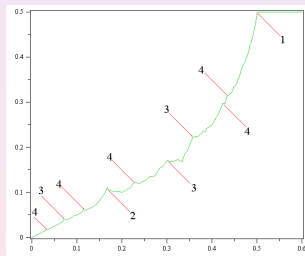
Applying the Taylor-Green-Kubo method yields

$$D(h) = \frac{[h]^2}{2} + \left(\frac{1-\hat{h}}{2}\right) (1 - 2[h]) + T_h(\hat{h})$$

with $\hat{h} := h \bmod 1$ ($h \notin \mathbb{N}$), $\hat{h} := 1$ ($h \in \mathbb{N}$), $\hat{h} := 0$ ($h = 0$),
where $T_h(x)$ is a de Rham-type function.

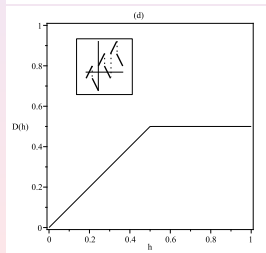
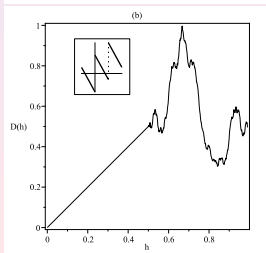
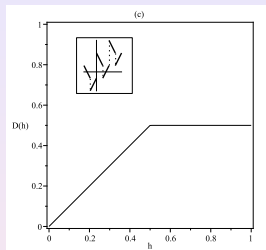
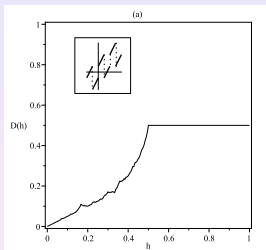


on large scales we recover
the **random walk solution**



on small scales $D(h)$ is again
partially a **fractal function**

... and further strange diffusion coefficients

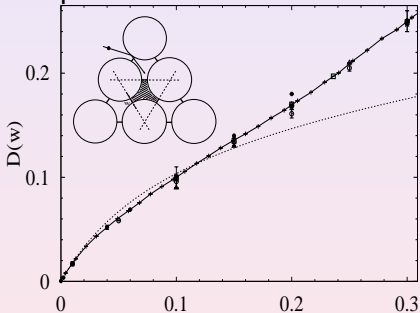


Knight, RK, Nonlinearity (2011)

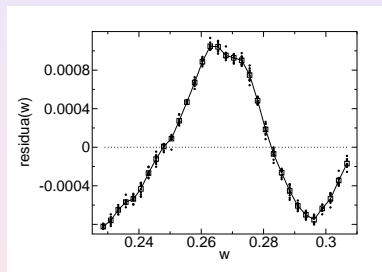
Irregular diffusion coefficients in the Lorentz gas

diffusion coefficient D vs. minimal spacing w between two nearby scatterers (Klages, Dellago, 2000)

computer simulation results:



residua for large w :



dots (left): random walk approx. (Machta, Zwanzig, 1983)
 \Rightarrow periodic Lorentz gas exhibits **'irregular' diffusion coefficient**
open question: degree of smoothness?

Summary

- How does the **diffusion coefficient** of a chaotic map depend on **size** and **position** of a hole?

two surprising results:

- 1 **size:** contrary to intuition, a **smaller hole** may yield a **larger diffusion coefficient**
 - 2 **position:** **violation of simple random walk approximation** for the diffusion coefficient if the hole converges to a *periodic orbit*
- intimate relation between **hole-dependence of escape** and **fractality of parameter-dependent diffusion coefficients**

References

- **hole-dependent diffusion:**

G.Knight, O.Georgiou, C.P.Dettmann, R.Klages,
preprint arXiv:1112.3922 (2011)

- **fractal diffusion coefficients:**

